

THE HEALTH NETWORK OF THE CHESTER COUNTY HOSPITAL ■ SUMMER 2007

# SYNAPSE

*Advancing Care  
Building Community*

THE CHESTER COUNTY HOSPITAL SHARES ITS VISION FOR GROWTH





# Foundation Calendar

Fall 2007 • For details call 484.431.5329 • [www.cchosp.com/foundation](http://www.cchosp.com/foundation)

## DILWORTHTOWN *Wine* FESTIVAL

**Benefits The Cancer Center of Chester County**  
**October 14 • 16th Annual**  
**Dilworthtown Inn, West Chester**

## FORE HEALTH *Golf Tournament*

**Benefits The Chester County Hospital**  
**September 17 • 22nd Annual**  
**White Manor Country Club, Malvern**

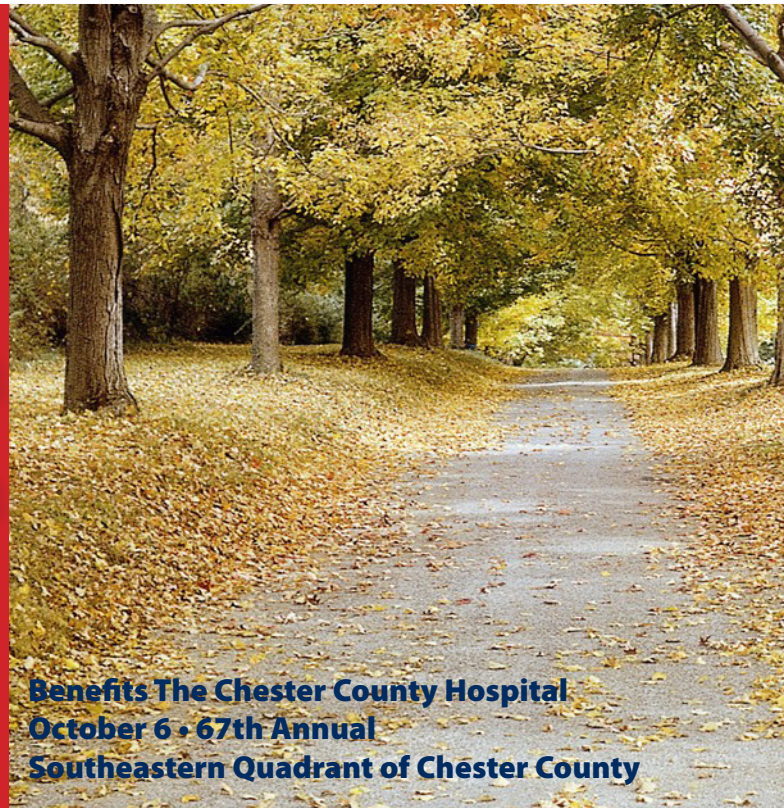


## SHINE

**Benefits The Cancer Center of Chester County**  
**October 20 • Founded in 1998**  
**Winterthur Country Estate, Delaware**

## *Chester County Day* HOUSE TOUR

**Benefits The Chester County Hospital**  
**October 6 • 67th Annual**  
**Southeastern Quadrant of Chester County**





# CONTENTS



## 2 OUR PRESSING NEED

Chester County is a dynamic community. And just as the make-up and health needs of the residents of the county are changing, so must The Chester County Hospital to uphold its good care of the residents.



## 5 OUR PLAN FOR GROWTH

By the year 2010, the Hospital would like to be celebrating the grand opening of a 160,000-square-foot addition to house cardiovascular services and operating rooms, as well as 48 new in-patient beds.



## 9 OUR HISTORY, OUR VISION

To better plan for the future, the Hospital must respectfully remember its heritage that brought it to the present. Past growth and future expansion plans have all followed that simple, yet important, mission of providing good healthcare to all Chester County residents.



## 13 NEW DOCTORS JOIN THE TEAM

Meet and learn more about the talented new physicians who have recently joined The Chester County Hospital medical staff.



## 14 MOVERS, SHAKERS, NEWSMAKERS

Find out about fascinating people and events at The Chester County Hospital.



## 16 HOSPITAL OF DISTINCTION

Learn more of the latest news that distinguishes The Chester County Hospital.

**COVER PHOTO** The Hospital seal, located in the oldest section of the building, has become a symbol of the Hospital's growth.

**INSET** Lester Bowman of Plant Operations proudly polishes the seal. ➤

### Dear Neighbors,

Whether you've visited us as a patient, a guest or as a professional you've most likely seen the Hospital's shining seal which is proudly displayed in the floor in the heart of the original building, near the Hospital cafeteria. It was placed in the building back in 1925 in honor of the generous financial gift given to The Chester County Hospital by Mr. Pierre S. du Pont. It memorializes his employee and friend Mr. Lewes A. Mason in recognition of the care he received from our Medical staff during the Influenza outbreak of 1918. The seal is regarded in such high esteem that many of the alumnae of our Nursing School still refuse to walk on it, as was the tradition established by their instructors. Mr. du Pont's inaugural \$1,000,000 donation set the Hospital on the path to become the healthcare facility that it is today. We are proud of our heritage, our independent non-profit status, and our ability to serve our community for the past 115 years. Over the years, in response to the needs of the community, we have gone through times of great growth. We are again eagerly heading into one of those times and have expansion plans to proactively meet the health needs of our neighbors.

**In this issue of Synapse, we are sharing our vision with you.**

We are excited about what we will be able to offer our community with this expansion, and hope you will be too. Over the next few years, our vision will become a reality, and we will keep you informed of the progress of the building plans and philanthropic successes.

Sincerely,

H.L. Perry Pepper  
President & CEO  
The Chester County Hospital



LETTER FROM THE PRESIDENT

# OUR PRESSING NEED



OVER THE PAST 15 YEARS, BUT ESPECIALLY IN THE LAST FIVE, CHESTER COUNTY HAS EXPERIENCED A DRAMATIC POPULATION EXPLOSION, MAKING IT THE FASTEST GROWING COUNTY IN SOUTHEASTERN PENNSYLVANIA. DURING THE 1990s, THE COUNTY'S POPULATION GREW BY NINE PERCENT, AND BETWEEN 2000 AND 2011, IT IS PROJECTED TO GROW BY ANOTHER 18 PERCENT — MORE THAN TWICE THE RATE OF GROWTH IN NEARBY BUCKS AND MONTGOMERY COUNTIES, AND NEARLY 10 TIMES THE RATE IN DELAWARE COUNTY.

While exciting, such growth brings with it an ever-increasing demand for excellent health care. The Chester County Hospital is feeling the impact. As the largest of the five hospitals in Chester County, it handles nearly one-third of all emergency room visits and inpatient admissions, and more than one-third of the births in the county.

## *Facing the Challenge of a Growing— and Aging—Population*

**“The growth has reached a point where we are operating above capacity much of the time,” says Mary Thomson, Senior Vice President for Corporate Development. “For instance, it’s not unusual to have 10 to 12 people in the Emergency Department waiting for a bed in the Hospital. The demand has outstripped supply.”**

The shortage of beds increases wait times for patients and families, and on occasion has forced the Hospital in the past to divert ambulances to other facilities. Beyond the Emergency Department, services and systems throughout the Hospital are hard-pressed to meet the current level of demand for care, which places added stress on staff members. And the area's population growth is expected to continue.

Even as the Hospital copes with county growth, it remains committed to its core mission: serving all people who need care, regardless of their ability to pay. “This has been our mission since 1892 and it still guides us today,” Thomson says. “We care for many patients who come to us through programs for the uninsured and the underinsured. It is an essential part of our mission.”

The numbers paint a clear picture of how much the demand for care has grown. **“We have seen a 34 percent increase in admissions over the past 15 years,”** says Suzy Bowden, a Planning Associate at The Chester County Hospital for the past 20 years.



## UTILIZATION STATISTICS, 1991-2006

NUMBER OF . . .	1991	2000	2006
<b>Inpatient Admissions</b>	12,214	12,859	16,333
<b>Outpatient Visits</b>	200,176 (est.)	365,814	406,876
<b>Emergency Department Visits</b>	30,950	31,528	41,774
<b>Births</b>	1,808	1,999	2,287

The numbers in other areas are just as impressive: **more than a 100-percent increase in outpatient visits, a 35-percent increase in Emergency Department visits, and a 26-percent increase in babies born**—all since the early 1990s.

Until a few years ago, the Hospital found ways to address the growing demand. Throughout the health-care industry, new treatments and surgical techniques were enabling more people to be treated as outpatients, which alleviated some of the demand for inpatient admissions. The Hospital also improved its systems so that inpatients could be examined more efficiently, instead of waiting for test results or paperwork.

“We focused on our efficiency, and it worked for a time, but the crunch is getting worse now,” Thomson says. A few years ago, the Hospital commissioned a study which projected that it would have to add 45 to 60 beds and expand the Emergency Department to meet demand.

“The time had come to do something major. We knew we needed to build, and we needed to come up with a plan that would not only alleviate our bottlenecks by 2010, but also give us a foundation for future growth,” she adds.

The increased demand for health care in Chester County comes from a population that is not only

growing, but also aging. Over the next five years, the 65-to-74-year-old population is projected to increase by 33 percent. The next fastest growing groups are 45-to-64-year-olds, projected to increase by 16 percent, and those over 75, who will increase by 11 percent.

“The elderly population is shown to have a hospital admission rate two to three times that of the average population,” says Bowden. “As we look at the numbers, we know that we have maximized what we can do with our current beds. As a nonprofit, stand-alone hospital, we are committed to serving this community, and we have to expand to do so.”

*continued* ➤

## SERVICE AREA POPULATION BY AGE, 2006-2011

AGE GROUP	2006	2011	% CHANGE
<b>0-17</b>	106,578	110,020	3%
<b>18-44</b>	150,206	153,250	2%
<b>45-64</b>	114,190	132,714	16%
<b>65-74</b>	24,949	33,301	33%
<b>75+</b>	24,411	27,211	11%
<b>TOTAL</b>	<b>420,334</b>	<b>456,946</b>	<b>9%</b>

## FOCUSING ON CARDIOVASCULAR DISEASE

Although The Chester County Hospital faces increased demand in all areas, the aging of the population raises particular concern about cardiovascular disease, the leading cause of death in the United States.

“Heart disease will kill 40 percent of us,” says Verdi J. DiSesa, M.D., Chief of Cardiac Surgery. “We know that many people 45 and over who are moving into the area either have, or are at risk for, cardiovascular disease. You just have to look at all of the retirement communities springing up here to know that demand is going to increase.”

The Hospital is in an excellent position to meet that demand, thanks to the development of its cardiovascular program over the past 15 years. The program has evolved from diagnosing disease in the early 1990s to offering a full spectrum of care through



**Heart surgeons from the Cardiovascular Center at The Chester County Hospital, Dr. Martin LeBoutillier III and Dr. Verdi J. DiSesa.**

The CardioVascular Center at The Chester County Hospital, founded in 2001. The Center manages every aspect of care related to heart and vascular disease, from prevention and diagnosis, to surgery and other treatments, to cardiac rehabilitation and secondary prevention.

“The program is designed not only to locate all of the services in one place, but to integrate them seamlessly as well,” says DiSesa. “We want to engage patients in the lifetime management of their disease.”

Patient-centeredness is what makes the Center unique, says Jean Caulfield, Senior Vice President, Professional Services, who oversees the program.

“Our approach is to bring specialists and services to the patients, rather than sending them out to search for what they need,” she says. “We are being noticed for this. All of our clinical areas have been growing over the past several years—surgeries alone are up about 15 to 20 percent. We’re drawing patients not only from Chester County, but as far away as Princeton, New Jersey.”

Also attracting patients from longer distances is the Hospital’s new collaborative relationship with the Cleveland Clinic in cardiac surgery, ranked as the number-one heart center in the nation by *U.S. News & World Report* for more than a decade. This partnership enables The CardioVascular Center’s clinical team to bring the most advanced knowledge, practices, and procedures right here to Chester County.

“Our philosophy is that the right care, delivered well and at the right time, saves resources in the long-run and is of higher value to the patient and our society,” says Dr. Verdi DiSesa.

---

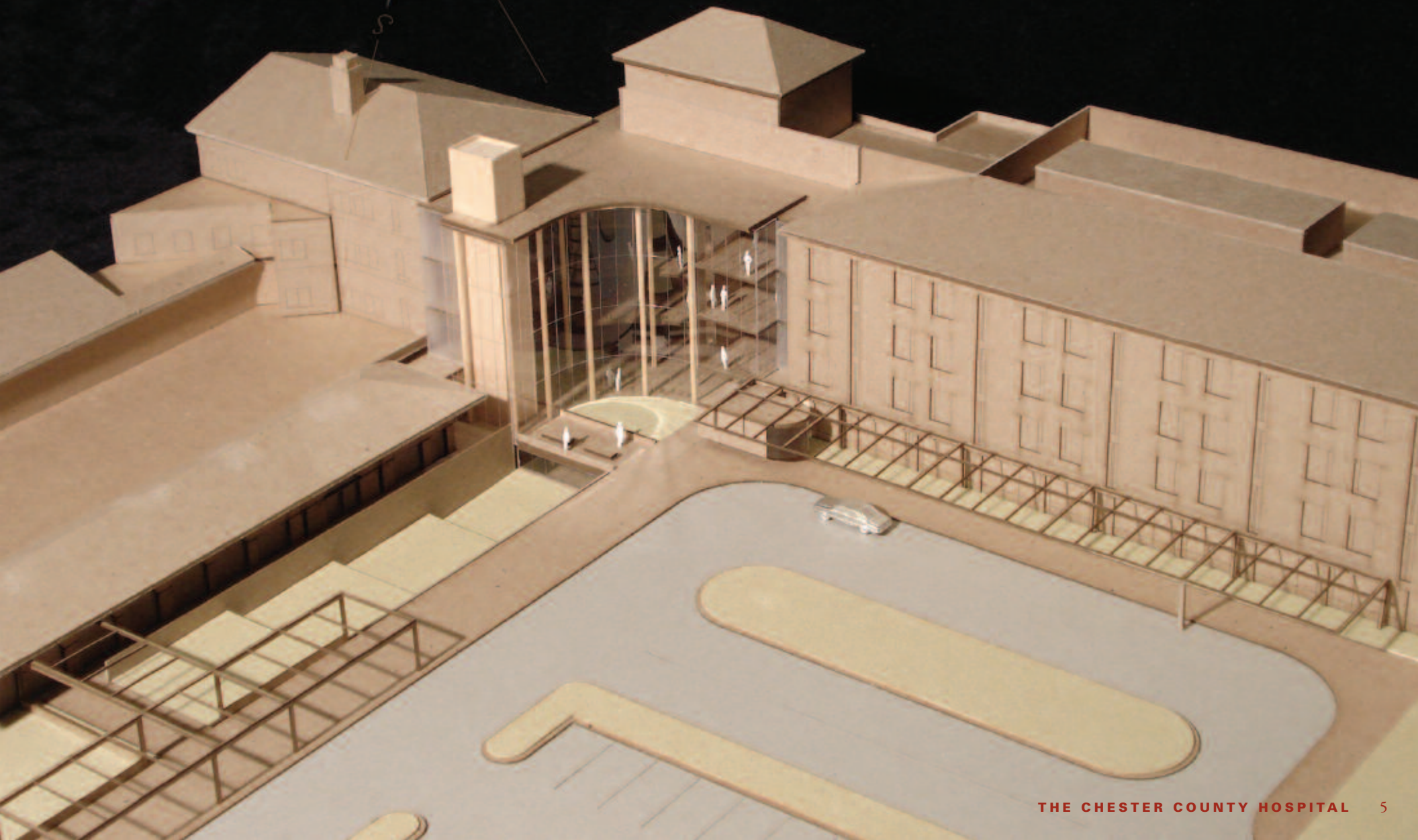
**To learn more about cardiovascular care and all the Hospital’s Medical Services, visit [www.cchosp.com](http://www.cchosp.com).**





# OUR PLAN FOR GROWTH

*Meeting the needs of our patients and families*





# THE FUTURE

H.L. PERRY PEPPER, PRESIDENT AND CEO, OF THE CHESTER COUNTY HOSPITAL CAN SEE THE FUTURE. THE FUTURE HE ENVISIONS INCLUDES A HOSPITAL WITH A UNIFIED FACILITY TO HOUSE ALL OF THE CARDIOVASCULAR SERVICES IT OFFERS, A NEW PROCEDURAL PLATFORM, MORE PATIENT BEDS, BETTER PARKING, A CENTRALIZED FOYER, AND A MORE EFFICIENT EMERGENCY DEPARTMENT.

Mr. Pepper's foresight is shared by the Hospital's Board of Directors as well. The Hospital has Ballinger for architectural and engineering services and L.F. Driscoll and Co. as the construction manager to assist with the details of implementing the plan.

**"Over the course of nearly two years, we've been putting the wheels in motion to make the plans happen," says Pepper. "There is a real need in Chester County to provide services and to make these capabilities available. Our hope is that by the year 2010 we will have realized these plans."**

At present, the Hospital has worked through several plan revisions with the architects and with the construction manager. Together, all are working toward creating a realistic building plan while keeping the building costs below the projected \$100 million budget. To help fund building costs, a \$25 million capital campaign has been launched reaching out to its Board members, physicians, employees, Auxilians and volunteers, as well as generous friends. This fall,



OVERHEAD SITE PLAN

a request for participation in the campaign will be extended to the community at large.

In the meantime, the Hospital continues to carve detail into the drawings.

Principal Ballinger architect, Louis A. Meilink, Jr., AIA, states, "The Hospital has truly maintained its community-first approach to this building project. We've revised the drawings several times between the first draft and today, and mainly that is in response to feedback from the people within the organization and within the community."

This past January, Pepper and his team began to share the vision for the Hospital with more and more people, including legislators, immediate neighbors, physicians and employees. Through conversations with these various constituents, the plan continues

to evolve, as the Hospital works toward getting site plan approval from the West Goshen Board of Supervisors.

"The Chester County Hospital's land is strangely split between West Goshen Township and West Chester Borough. The new addition that we are proposing sits largely in West Goshen, with just a small portion, that is part of a second phase, in the Borough," says Vice President for Support Services Lou Guardiani. The Hospital began its conversations with West Goshen this past May.

The addition itself, the first expansion since 1986, is "L" shaped. In this first phase, just the short leg of the "L" would be built, increasing overall bed capacity to 286. This would be a five-floor building, with four floors above ground level. The bottom



floor, below grade, will house all of the procedural rooms, which are currently split among two floors and two halls in the oldest part of the Hospital. Moving these rooms to one contiguous area will increase efficiency, especially among the services that support them.

The first floor above grade will be the new home to The CardioVascular Center and will connect to a centralized lobby. Above it will sit three more floors. The first two will hold 48 new inpatient beds, and the top floor will be created, but shelved for future growth. The same is true for the long leg of the “L,” which will be accounted for now, but saved for future expansion.

“Our plan for growth is both reactive and proactive,” said Pepper. “We recognize the existing health needs in our community and so we are working toward creating a facility that addresses

those needs, but at the same time we are building in the opportunity for future growth now so that The Chester County Hospital will continue to be able to adapt to future needs down the road.”

The anticipated addition of 48 new beds will do a lot to alleviate the overcrowding the Hospital has been experiencing for some time. It will decrease wait-times, especially in the Emergency Department, and will allow for more private rooms. With The CardioVascular Center under one roof, so to speak, the Hospital will gain more space within its existing building to grow other programs. The scope of the highly-sought after existing space has not been determined, but decisions will be made with due diligence based on community need.

*continued* ➤

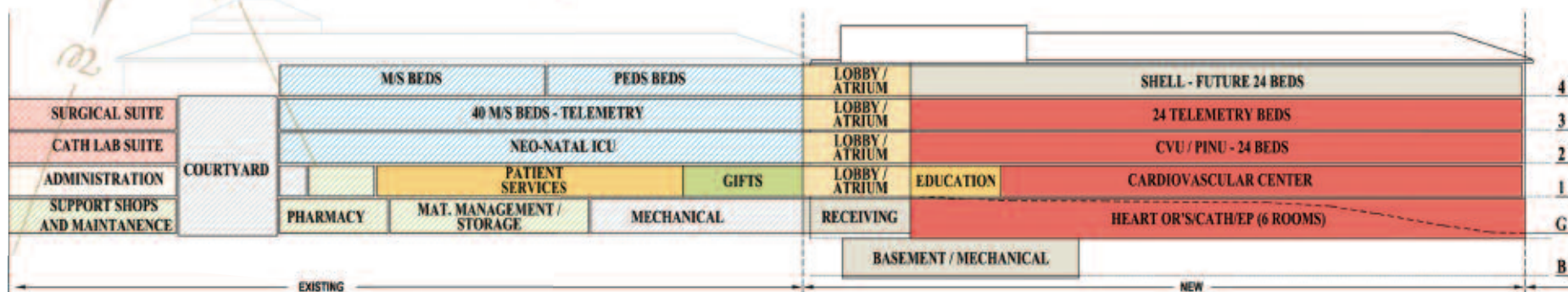
*In the life of any expansion plan, certain objectives need to be attained before the project can be realized physically. Here are a few milestones that have been achieved by The Chester County Hospital, and some more goals it expects to reach in due time.*

- \* **FEASIBILITY STUDY COMPLETED**
- \* **NEED RESEARCHED**
- \* **ARCHITECTURAL FIRM SELECTED**  
*Ballinger*
- \* **CONSTRUCTION MANAGER SELECTED**  
*L.F. Driscoll, Co.*
- \* **BUDGET OF \$98.2 MILLION ESTABLISHED**
- \* **DESIGN DEVELOPED**
- \* **BUILDING SCHEDULE CREATED**
- \* **LEGISLATORS INFORMED** *February 2007*
- \* **ADJACENT NEIGHBORS INFORMED**  
*March 2007*
- \* **FUNDRAISING CAMPAIGNS**  
*Winter 2006-Fall 2007*
- \* **WEST GOSHEN TOWNSHIP APPROVAL**
- \* **BOND FINANCING OF \$72.8 MILLION SECURED**
- \* **FUNDRAISING GOAL OF \$25.0 MILLION ACHIEVED**  
*To be completed (As of the print deadline, \$17.3 million has been raised.)*
- \* **GROUNDBREAKING**  
*Anticipated Winter 2007/08*
- \* **RIBBON CUTTING CEREMONY CELEBRATED**  
*Anticipated January 2010*





Our plan for growth is both  
*reactive and proactive*



## ARCHITECTURAL RENDERING

The proposed building plan also includes a centralized lobby to help with easier way-finding through all parts of the Hospital, as well as specific accommodations to the parking areas. In 2006, Hospital employees cared for more than 16,000 inpatients, more than 400,000 outpatients, and more than 40,000 Emergency Department visits. Based on these numbers, as well as the 1,900 employees and 400 physicians, a plan that allows for additional parking is critical. The Hospital is considering

expanding or reconfiguring the parking lots to alleviate the congestion for patients and visitors.

"It's important for people to know that this is a 'work in progress,' and we still have many milestones to achieve before the plans are completed," said Guardiani.

Among the milestones to be achieved is the financing. Although a fundraising campaign has been started with more than \$17 million raised in gifts and pledges to date, the Hospital needs

to secure nearly \$75 million bond financing for the balance.

The Hospital expects to break ground for the new addition by late 2007 or early 2008. In two years time, The Chester County Hospital would then hope to celebrate the grand opening of the new addition.

"I'm really looking forward to that day," said Pepper. "It will be one among many growth milestones in the lifetime of this Hospital."

The architectural renderings are work in progress. The final drawings may look different than what is printed here.



# OUR HISTORY • OUR VISION

IN THE LAST DECADE OF THE 19TH CENTURY, THE SEAT OF CHESTER COUNTY WAS A THRIVING COMMUNITY OF 8,028 PEOPLE. WEST CHESTER HAD BEEN INCORPORATED AS A BOROUGH IN 1799 AND BY THE LATE 1800S CLAIMED NUMEROUS PRIVATE AND PUBLIC EDUCATIONAL INSTITUTIONS, INCLUDING WEST CHESTER STATE NORMAL COLLEGE (NOW KNOWN AS WEST CHESTER UNIVERSITY). THERE WERE CHURCHES OF VARIOUS DENOMINATIONS AND A GREAT MIX OF BUSINESS ACTIVITY INVOLVING BANKS, RETAIL STORES, LUMBER YARDS, NURSERIES, AND RAIL SERVICE THAT CONNECTED WEST CHESTER AND PHILADELPHIA.

The Chester County Medical Society, which was comprised of physicians living and practicing in the County, was established in 1828 and was flourishing.

**But, at the time, there was no hospital.**

In December 1880, a group of physicians opened the West Chester Dispensary, primarily to provide

*Looking to the archives to chronicle  
our path for future growth*

medical care to the impoverished living in the area. The doctors rented rooms above a hardware and gunsmith store on West Market Street in the Borough. Staffed with two physicians, the Dispensary was open as long as there were patients to be seen. The physicians also visited the homes of patients who were unable to travel.

By March 1881, the Dispensary was treating 35 patients a week; however, expenses invariably exceeded income. Unable to raise sufficient funds to cover the operating costs, the physicians were forced to close the Dispensary in 1882. But the seed had been planted. The community had seen, and come to appreciate, what a medical facility could mean to its people.

*Before long there was renewed activity to spur the establishment of a hospital.*



## THE JOURNEY BEGINS

On May 19, 1892, local citizens joined with physicians at a public meeting to discuss the possibility of a hospital for West Chester. As a result, select members of the Chester County Medical Society were asked to circulate information outlining the need for a hospital, and committees were formed to solicit contributions





1925



1955



*operating rooms, circa*

and to prepare a charter and rules of organization. By the end of the summer a Board of Managers was selected and eight physicians were appointed to provide medical care at the planned hospital on a rotating basis. A charter was granted to the founders of the “West Chester Hospital” on September 12, 1892; the name was changed to “The Chester County Hospital” one year later.

Land on the north side of Marshall Square (*about one mile from the Hospital’s current location*) was purchased and bids were accepted for construction of the new facility. The cost exceeded available funds despite vigorous fund-raising, but the Board of Managers, unwilling to abandon or delay the project, moved forward with construction of a rear portion of the main building to house patients until the total facility could be completed. Community support was widespread. Fund-raising activities such as concerts, dances, cake sales and children’s fairs were organized by local citizens.

Ground was broken on October 31, 1892, and the

Hospital opened the rear portion structure for patients in March 1893. The first floor served as a kitchen and housed equipment for surgery as well. The second floor was divided into three rooms — two wards and a room for the Matron (Head Nurse). Five iron-frame cots were in the wards ready for use.

The first patient, Fred Stanley, was admitted on March 1, 1893, and treated for sciatic rheumatism. March 4, 1893 brought the first surgical patient, Benjamin Bush, who was discovered lying near the railroad tracks with both legs badly mangled. Bush’s plight generated great compassion and the community contributed to the purchase of artificial legs for him.

His case also strengthened community support for the new Hospital.

### EXPANSION BY 1908

From the day the Hospital opened with five patient beds in March 1893 plans were under way for expansion. By 1896 two more wings were added to house

men’s and women’s wards, bringing the Hospital’s capacity to 44 patients.

The contagious ward was built in 1904. This self-contained two-story building would prove to be an important addition; during the first year, 110 cases of typhoid were treated. Patients with diphtheria, measles and tetanus were quarantined there. A children’s ward and maternity ward were opened in 1908.

Despite all the advances in its physical plant, by 1914 the Hospital was in need of larger and more modern facilities. This was a major concern of the Board of Managers and medical staff in the late 1910s and early 1920s.

### TURNING POINT IN 1918

The years 1918 and 1919 saw perhaps the greatest use of the contagious ward. In July 1918, an outbreak of scarlet fever brought 92 patients to the Hospital, the Annual Report noting “admissions came rapidly; the wards and private rooms alike were crowded.” The



2007

future vision\*



present and future

nationwide influenza epidemic of 1918 reached Chester County that fall and the Hospital admitted 240 patients, including 30 Marines from Camp Fuller in Paoli. Scarlet fever was rampant in the spring of 1919, and again the contagious ward was busy for many weeks.

One young man, Mr. Lewes A. Mason (*pictured below*) was among those people who contracted influenza during the 1918 pandemic. Lewes was the personal employee of Mr. Pierre S. du Pont, who was the affluent great-grandson of E.I. du Pont, founder of E.I. du Pont de Nemours & Co.

When Lewes became ill, Hospital physicians were asked to attend to him at the du Pont's Longwood estate, because Mr. du Pont had been pleased with the medical attention Lewes had received two years prior when he fell from a tree and injured his hip. Unfortunately, the devastating Spanish Flu claimed Lewes' life, just as it had so



many others across the globe. He passed away in 1918.

Appreciative of the good care the physicians from The Chester County Hospital gave to his employee and friend, Mr. du Pont offered to fund the expansion and modernization of the Hospital with a \$1,000,000 gift as a lasting tribute to Lewes.

### NEW HOSPITAL BY 1925

Throughout his lifetime Mr. du Pont was extremely interested in improving his community. He gave generously for the benefit of public schools, provided funds for the improvement of local roads, and continually supported various civic organizations. Mr. du Pont's personal commitment to state-of-the-art healthcare furthered the dream of those community supporters who had founded the Hospital.

Mr. du Pont established a trust fund for the Hospital to use for its expansion. Architects were consulted and plans were drawn, but the post-war recession prohibited construction. By 1923, it was decided that an entirely new hospital facility was the only suit-

able means of expanding and modernizing the Hospital.

The best possible hospital building was the goal, and great care was taken to achieve it.

With Mr. du Pont's approval, land for the new hospital was purchased on a hill overlooking the borough of West Chester, the Hospital's present site. Ground was broken on March 20, 1924, and patients were transferred to the new facility on September 28, 1925. There was space for 120 beds, and the building had two large operating rooms, a men's medical and surgical ward, a women's medical and surgical ward, a maternity ward, a children's ward, and a ward for patients with contagious diseases. A room was designated to receive accident cases, as well. A formal celebration of the new building was held in September 1926.

Mr. du Pont's magnanimity enabled The Chester County Hospital to continue its mission of providing quality medical care to all members of the community. He took an active interest in the Hospital until his death on April 5, 1954.



## MAJOR GROWTH FROM 1926-PRESENT

*In the intervening years, The Chester County Hospital's growth continued in ebbs and flows. It saw major expansion occur during the following time periods:*

**1926** Mr. du Pont and other philanthropists funded the addition of an east wing to house living quarters, recreation areas, a classroom and laboratory space for student nurses.

**1931** Mr. du Pont funded the addition of a west wing to house a new contagious ward, as well as a library, a board room, clinics, a pharmacy, and a floor primarily devoted to physiotherapy.

**1955** The Hospital expanded in three areas allowing room for two new operating rooms, a new children's department with 30 beds, an enlarged laboratory, new X-ray facilities, a large accident room, and a new central service department. The Hospital by this point had 200 beds total.

**1971** A multi-floor addition beyond the existing west wing was built to house more patient rooms.

**1986** The North Pavilion expansion created a new front entrance to the Hospital, an expanded Emergency Department to better accommodate emergent cases, and an easy-to-find outpatient registration area and lab.

## THE VISION FOR THE HOSPITAL

The 238-bed Hospital that stands today is the result of three distinct efforts – the vision of the men and women who saw a need to provide a medical facility to a growing community; the philanthropic support of the du Pont family and the many, many other members of the community who believed in the Hospital's commitment to providing good care; and the ability of Hospital leaders to recognize and respond to increasing health needs among the many neighbors in the Chester County region. As the Hospital prepares for its next expansion plan, these three efforts continue to play a role in the Hospital's vision for the near and distant future. There's a need in the community, there is support by the community, and there is the ability to help the community. It's the legacy of advancing care and building community in which the women and men of The Chester County Hospital truly believe.

Information courtesy of The Chester County Hospital Foundation. To learn more about the history of The Chester County Hospital, visit [www.cchosp.com/foundation](http://www.cchosp.com/foundation).

*\* Future vision image courtesy of Ballinger. This image depicts the potential look of The Chester County Hospital's procedural platform.*

The Chester County Hospital Foundation has invited friends and neighbors to provide leadership in the "Advancing Care. Building Community." capital campaign.

### CO-CHAIRS

#### WIGGIE & JOHN FEATHERMAN



*Founding Co-Chairs of the Friends of The*

*CardioVascular Center, Wiggie and John Featherman have lived in West Chester for four decades. Wiggie serves on the Foundation Board and John is Chairman of First National Bank of Chester County.*

#### GRETCHEN & ROY JACKSON

*(not pictured) Founding members of The Friends of The CardioVascular Center, Gretchen and Roy live in West Chester. Gretchen and Roy are members of the Corporate Development Committee.*

#### BONNIE & TOM MUSSER



*Members of the Friends of The CardioVascular Center,*

*Bonnie and Tom Musser live in Kennett Square. Chairman of Tri-M Corporation, Tom serves on the Foundation Board and is Chair of the Corporate Development Committee.*

#### MARY & BILL WARDEN



*Foundation Board member since 1987 and co-founder of May Festival,*

*Mary Warden has volunteered weekly in the Emergency Department for years. A member of the Willistown Auxiliary, Mary serves on the Corporate Development Committee. Mary and Bill live in Newtown Square.*

### HONORARY CO-CHAIRS



**IRÉNÉE DU PONT, JR.**  
*Nephew of Pierre S. du Pont, Irénée du Pont resides*

*in Montchanin, Delaware.*



**PENELOPE PERKINS WILSON**  
*A Hospital Board member from 1973-1985 and member*

*of the Willistown Auxiliary, Penny Wilson is a resident of Paoli.*

### DIVISION CHAIRS

**NANCY CORSON & JOHN HALSTEAD** *Co-chairs of the Lead Gifts Division*

**GABE RUGGERIO, D.O.** *Chairman of the Medical Gifts Division*

**SCOTT GREENLEY & ELIZABETH ZEHNER, R.N.** *Co-captains of the Employee Division*

### FOUNDATION & HOSPITAL LEADERSHIP

**WILLIAM W. WYLIE, JR.** *The Chester County Hospital Board Chairman*

**KEVIN HOLLERAN** *The Chester County Hospital Foundation Board Chairman*

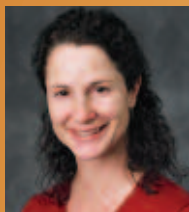
**H.L. PERRY PEPPER** *President and CEO*





## NEW PHYSICIANS welcome

### ATTENDING STAFF



**Renee Bender, D.O.,** Attending Staff, Department of OB/GYN. Dr. Bender graduated from the Philadelphia College of Osteopathic Medicine where she also completed an internship and residency. Dr. Bender is Board Certified in obstetrics and gynecology, and has joined Associates for Women's Medicine.

**Una Brewer, M.D.,** Attending Staff, Department of Pediatrics. Dr. Brewer graduated from Jefferson Medical College and completed an internship and residency at Fitzsimons Army Medical Center in Colorado. Dr. Brewer is Board Certified in Pediatrics and has joined Kids First – Chadds Ford.

**Edward Carter, M.D.,** Attending Staff, Department of Radiology. Dr. Carter graduated from the University of Pittsburgh School of Medicine and completed an internship at and residency at Christiana Hospital in Delaware and a fellowship at the University of Maryland. Dr. Carter is Board Certified in Radiology.

**Jeffrey Gramp, M.D.,** Attending Staff, Department of Radiology. Dr. Gramp graduated from Hahnemann School of Medicine and completed an internship at The Reading Hospital, a residency at The Bryn Mawr Hospital and a fellowship at Thomas Jefferson University Hospital in Philadelphia. Dr. Gramp is Board Certified in Radiology.

**William P. Levin, M.D.,** Attending Staff, Department of Radiology, Section of Radiation Oncology. Dr. Levin graduated from Sackler School of Medicine in Israel. He completed an internship at Yale New Haven Hospital in Connecticut, a residency at the University of Pennsylvania and a fellowship at Massachusetts General Hospital. Dr. Levin is Board Certified in Radiation Oncology.

**Lisa Michaels, D.P.M.,** Attending Staff, Department of Surgery, Section of Podiatry. Dr. Michaels graduated from New York College of Podiatric Medicine and completed an internship and residency at Wyckoff Heights Medical Center in New York. Dr. Michaels has joined Drs. Jacobs and Mushlin in practice.

**Wadia Mulla, M.D.,** Attending Staff, Department of OB/GYN, Section of Perinatology. Dr. Mulla graduated from Northwestern Ohio University's College of Medicine. She completed an internship and residency at Akron City Hospital and a

fellowship at the Hospital of the University of Pennsylvania. Dr. Mulla is Board Certified in OB/GYN, Maternal Fetal Medicine and Medical Genetics.

**Mimi Pinto, D.O.,** Attending Staff, Department of Radiology. Dr. Pinto graduated from the Philadelphia College of Osteopathic Medicine and completed an internship at Frankford Hospital in Philadelphia, a residency at Mercy Catholic Medical Center in Darby, PA and a fellowship at Thomas Jefferson University Hospital. Dr. Pinto is Board Certified in Radiology.

**David Singer, M.D.,** Attending Staff, Department of Surgery, Section of Plastic and Reconstructive Surgery. Dr. Singer graduated from the University of Texas Southwestern Medical School. He completed an internship and residency at Brown University in Providence, Rhode Island and a fellowship at Mercy Hospital in Maryland. Dr. Singer has joined Plastic and Reconstructive Surgery of Chester County.

**Barry Smoger, M.D.,** Attending Staff, Department of Radiology. Dr. Smoger graduated from Jefferson Medical College and completed an internship and residency at Hahnemann University and a fellowship at The Children's Hospital of Philadelphia. Dr. Smoger is Board Certified in Nuclear Medicine and Radiology.

**John Wang, M.D.,** Attending Staff, Department of Medicine, Section of Pulmonary Diseases. Dr. Wang graduated from Jefferson Medical College and completed a residency at the Medical Center of Delaware and a fellowship at Brown University in Providence, Rhode Island. Dr. Wang is Board Certified in Internal Medicine, Critical Care Medicine and Pulmonary Diseases.

**Sean Walpole, D.P.M.,** Attending Staff, Department of Surgery, Section of Podiatry. Dr. Walpole graduated from Temple University School of Podiatric Medicine and completed an internship and residency at Presbyterian Medical Center in Philadelphia and a fellowship at the University of Dresden in Germany. Dr. Walpole is Board Certified in Podiatric Surgery and has joined Foot and Ankle Associates.

### COURTESY STAFF

**Matthew Schaeffer, M.D.,** Courtesy Staff, Department of Medicine, Section of Physical Medicine. Dr. Schaeffer graduated from Temple University School of Medicine and completed an internship at Lankenau Hospital and a residency at Stanford University. Dr. Schaeffer is Board Certified in Physical Medicine and Rehabilitation and has joined Chester County Orthopedic Associates.

For a complimentary Medical Staff Directory, please email [jbixler@cchosp.com](mailto:jbixler@cchosp.com).





# movers ■ shakers ■ newsmakers



▲ The Hospital hosted a reception for elected officials in February to share with them the Hospital's vision for growth and its capital plans. Pictured from left are H.L. Perry Pepper, President and CEO, The Health Network of The Chester County Hospital; U.S. Congressman Jim Gerlach, 6th District of Pennsylvania; Kevin Holleran, Esq., Chairman, The Chester County Hospital Foundation; William Wylie, Jr., Chairman, The Chester County Hospital; and Verdi DiSesa, M.D., Chief, Cardiac Surgery, The Chester County Hospital.



▼ In February, the men and women of The Chester County Hospital joined in the national heart month celebration called "Wear Red Day." It's an event to show support of and bring awareness to women's heart disease. At the Hospital, the color-coordinated day was organized by The CardioVascular Center of Chester County as a way to unite against the life-threatening disease.



◀ In early June, more than 90 golfers took to the course at Whitford Country Club in support of women's and children's health services at The Chester County Hospital. The outing, organized by Andy and JoAnna Benton and the Women's Health Services department of the Hospital, hosted this first annual event to raise money to purchase an OmniBed for the Neonatal Intensive Care Unit. Between charitable contributions prior to the outing, and monies raised at the fundraiser, a new bed has been purchased and will arrive in the NICU this summer. Andy Benton (left) is pictured here with his foursome - Steve Buterbaugh, Brian Smith and Robert Cohen.



▼ The Turks Head Auxiliary hosted the first-ever Polo Cup in June. With more than 400 people in attendance and with great sponsorship support, the Auxiliary raised more than \$29,000 for the Hospital. Auxiliary co-chairs, Coleen Herbst (pictured left) and Lisa Kitchen (pictured right), along with major sponsor representative Chris Moge (center) from Verizon proudly presented the winning Livin' the Vision Polo team with the prized Polo Cup. Team Members: Martin Garzaron, Pablo Avalos, Scott Brown and Jacob Brown.



▼ The leadership of the Women's Auxiliary to The Chester County Hospital proudly presented H.L. Perry Pepper, Hospital President, William Wylie, Hospital Board Chairman, and Kevin Holleran, Foundation Board Chairman with a check for \$576,084.76. This check represents the year-long fundraising efforts of the Auxiliaries numerous branches. Their donation will be added toward their \$1,000,000 pledge to the Hospital capital campaign.



Pictured (from left) are Joan Atkins, William Wylie, Nancy Robinson (past President), Kevin Holleran, Debbie Hess (newly-elected President), H.L. Perry Pepper, Doris Mitman, Mary Harris, Dianne Vaughan and Charlotte Gilpin.

## May Festival 07

Once again, May Festival brought out a major crowd to enjoy the rides (middle), the food, the Dash for Diabetes (top), the Challenge for Cancer bike race, as well as the children's activities. Included among the fair-goers were Cardiologist Dr. Clay Warnick (bottom, left) and Congressman Joe Sestak (bottom, right), who was accompanied around the grounds by long-time friend, Dr. Rick Donze (center), Senior Vice President of Medical Affairs for The Chester County Hospital.







### ONE-OF-A-KIND INPATIENT HOSPICE UNIT

The Neighborhood Visiting Nurse Association (NVNA) will open a sixteen-bed inpatient hospice unit at 400 E. Marshall Street, West Chester, in the summer of 2007. This unit will be the only facility of its type in Chester County. NVNA is a division of the Neighborhood Health Agencies which is part of The Health Network of The Chester County Hospital. To learn more, call 610-696-6511 or visit <http://www.nvnacc.com>.

### COMMENDATION FROM THE COMMISSION ON CANCER

The Chester County Hospital has received a "Three-Year with Commendation Approval Award" from the

In early 2006, The Chester County Hospital began a program to establish its own benchmarks for achievement to improve Hospital-wide performance through the areas of 14 key task forces. It calls the effort to reach, exceed, raise and achieve these standards for care its "Hospital of Distinction" campaign. It's an internal effort, but through this new recurring section in *Synapse*, we are happy to share a few recent accolades that distinguish our Hospital.

Commission on Cancer. According to the American College of Surgeons Commission on Cancer, the Approvals Program focuses on eight important areas of program activity based on objective evaluation of the 36 standards. The Three-Year with Commendation is awarded when the program complies with all standards and receives a commendation rating for one or more of the eligible standards. Facilities receiving this approval award at the time of the survey will be evaluated for eligibility to receive the Commission on Cancer Outstanding Achievement Award.

### A SURGICAL EXPEDITION

For three intensive weeks, The Chester County Hospital's associate cardiothoracic surgeon Martin LeBoutillier, III, M.D. was completely immersed in Cleveland Clinic's highly acclaimed thoracic surgery program to expand his thoracic surgery skills.

Known nationally for its cardiovascular services, Cleveland Clinic is a medical facility with a high volume of patients who gravitate to the Clinic because of its surgical expertise in multiple specialties. In April 2006, the

cardiac surgery program at The Chester County Hospital was designated by Cleveland Clinic to be one of its select affiliate hospitals in heart surgery. Dr. LeBoutillier's extended visit, which was the first of its kind for Cleveland Clinic, was possible because of the clinical affiliation. The Hospital already has a thriving and highly regarded surgical program and this specialized component will seek to attract those local prospective lung surgery patients who might otherwise choose a tertiary hospital.

"To now be able to increase the availability of this type of needed service to our own community is wonderful," he says, adding "That's our mission; that's what we're all about."

### HONORS AND ACCOLADES

Within the past few months, the Hospital has received national recognition for three of its health-care marketing efforts during the 2006 calendar year. From the Healthcare Marketing Report, the Corporate Marketing Team earned Merit Recognition for its women's health oncology radio advertisement, called "New Day." This ad premiered in October 2006 on several regional



and local radio stations.

In addition, the Hospital earned two Aster Awards for two different marketing campaigns. A Silver Trophy was awarded to our billboard design called "Ten Fingers, Ten Toes" which was on display in regional and local locations in July 2006 to promote our clinical excellence in maternity care from Health-Grades® awarded in 2005. The Hospital earned a Gold Award for the aerial photograph (inset) taken to help celebrate the affiliation with Cleveland Clinic in April 2006. This photo was featured on the October 2006 issue of *Synapse* magazine. Both of these award programs recognize health-care marketing achievements by our peer Hospitals from all 50 states.



# WELLNESS CALENDAR

## • New Solutions : Hip & Knee Arthritis

The latest in medical and surgical treatment options for arthritis.

Date + Time September 06, 4:00 pm  
Location Jenner's Pond Retirement Community  
2000 Greenbriar Lane, West Grove, PA 19390

Date + Time November 14, 1:00 pm  
Location Fern Hill Wellness Resource Center

## • Healthy Steps Class

This 16-week, three-phase program teaches how to lose weight safely.

**Step 1 :** Stop Weight Gain

**Step 2 :** Start Losing Weight

**Step 3 :** Maintain Weight Loss

Date + Time August 27, 6:30 pm  
Location North Hills Wellness Classroom

## • Stop Smoking Now!

This eight-session program prepares you to be a non-smoker.

Series September 24 - November 12 : Mondays  
October 4 - November 29 : Thursdays  
November 1 - December 27 : Thursdays  
November 26 - December 20\*  
(\*4-week session Mondays and Thursdays)

Time 7:00 pm  
Location Fern Hill Wellness Resource Center  
Fee \$75

## • Heart Tracks

A Cardiovascular Screening & Assessment

A \$15 fee is charged for blood work.

Date + Time September 25, 4:00 pm  
Location Kennett YMCA\*  
(\*No fee : funding provided by Kennett Area YMCA and PA Dept. of Health)

Date + Time November 12 4:00 pm  
Location The Center for Health and Fitness

Date + Time December 11 4:00 pm  
Location Fern Hill Wellness Resource Center

## • Prostate Cancer Screening

Date + Time September 27, 6:00 pm  
Location The Cancer Center of Chester County

## • What You Should Know about Human Papillomavirus (HPV)

Date + Time October 03, 7:00 pm  
Location Fern Hill Wellness Resource Center  
Presenter Richard Mansfield, MD, Ob/Gyn

## • Depression Screening

Date + Time October 12, 9:00 am  
Location Fern Hill Wellness Resource Center  
Presenter Dennis Given, PsyD, LPC

## • Coping with Stress & Chronic Illness

Learn to deal effectively with the stress associated with medical issues.

Date + Time October 19, 12:30 pm  
Location Fern Hill Wellness Resource Center  
Presenter Dennis Given, PsyD, LPC  
Fee \$25

## • Supermarket Tour

Learn how to make healthy decisions with our Registered Dietitian.

Date + Time October 24, 6:00 pm  
Presenter Amy Corse, RD  
Location Wegmans : 1056 Lancaster Ave., Downingtown

## • Baby? Maybe?

If you are expecting or planning on starting a family in the near future, then don't miss this event. Expo, tours, giveaways, education and much more!

Date + Time November 01, 5:00 pm  
Location The Chester County Hospital

## • Diabetes Day

Half-day program includes educational presentations and expo.  
*Light breakfast and snacks served.*

Date + Time November 10, 9:00 am  
Location Downingtown Country Club  
Speakers The Chester County Hospital Medical Staff

*For more information on individual nutrition counseling or diabetes education, call 610-738-2835.*

**REGISTRATION REQUIRED FOR ALL PROGRAMS.**

To register or for information, call 610-431-5644 or visit [www.cchosp.com/wellness](http://www.cchosp.com/wellness).

701 East Marshall Street • West Chester, PA • [www.cchosp.com/wellness](http://www.cchosp.com/wellness) • BEYOND GOOD CARE™





# Advancing Care. Building Community.

The Campaign for Chester County Hospital

**T**o meet the needs for immediate expansion, The Chester County Hospital has undertaken a major capital campaign, reaching out to ask the community to claim its birthright by providing philanthropic support for this much-needed building program.

With more than \$17 million in commitments from the Hospital's Board members, the Senior Management, the employees, the volunteers, the Auxilians, the Medical Staff, as well as many generous friends of the Hospital, the Capital Campaign is ready to move forward.

The success of the Capital Campaign will define the scope and timing for the project and determine the amount of financing which will be required. The Hospital has set of fund-raising goal of \$25 million. This fall, the Hospital will appeal to the greater community for its support.

**THE CHESTER COUNTY HOSPITAL  
FOUNDATION OFFICE**

**610.431.5330 • [www.cchosp.com/foundation](http://www.cchosp.com/foundation)**



The Health Network of  
The Chester County Hospital  
701 East Marshall Street  
West Chester, PA 19380

NON-PROFIT  
U.S. POSTAGE  
**PAID**  
PERMIT #9  
WEST CHESTER, PA

## SYNAPSE

*Synapse is a publication of  
The Chester County Hospital Corporate Marketing Department*

**William W. Wylie, Jr.**

*Chairman, Board of Directors*

**H. L. Perry Pepper**

*President*

**Colleen Leonard Leyden**

*Editor-in-Chief*

**Lisa M. Huffman**

*Managing Editor*

### **AN EQUAL OPPORTUNITY EMPLOYER**

*If you would like to be on our mailing list, or if you  
are receiving more than one copy of Synapse by mail,  
please call us at 610-738-2793. Thank you!*

### **DESIGN AND PHOTOGRAPHY**

*The Bing Group*

Visit us on the web at: [www.cchosp.com](http://www.cchosp.com)

**BEYOND GOOD CARE™**

